

Sky Villas Collection  
Penthouse 17

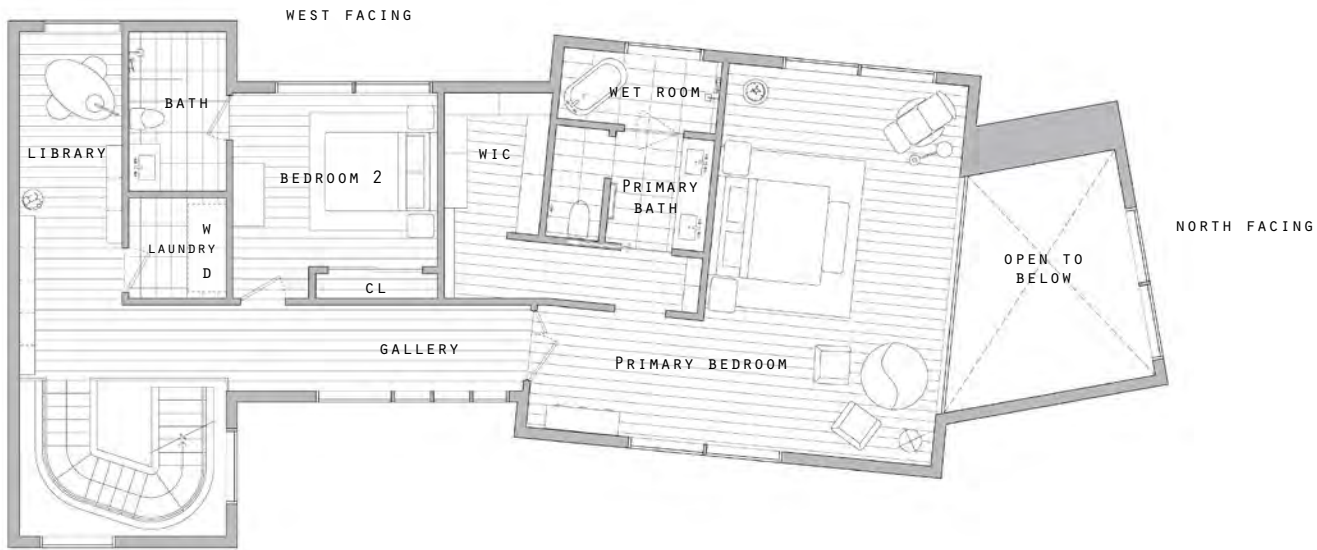
Duplex Penthouse with North, West and East Exposures

Interior: 2,916 sf / 271 sm  
Exterior: 826 sf / 77 sm

- Levels 4 and 5
- Three Bedrooms
- Three Baths
- Powder Room
- Three Parking Spaces

- Direct lift entrance to entry foyer
- Gallery with signature sculptural staircase and 23- ft vaulted ceiling
- Great room with open concept kitchen, dining and loggia
- Loggia with 22-ft vaulted ceiling, travertine fireplace and terrace
- Custom Italian Cabinetry with stone countertops
- Integrated Miele appliances including dual oven and full-height wine storage
- Bedroom 3 with en-suite bathroom, walk-in closet and private terrace
- Primary bedroom suite with 11-ft vaulted ceiling, walk-in closet and seating area Full-height glass wall in master bedroom with views
- Japanese-style onsen master bathroom with TOTO Neorest and radiant floor heating
- Bedroom 2 with 11-ft vaulted ceiling and en-suite bathroom
- Gallery and library with 11-ft vaulted ceiling

upper level



lower level



THIS DOES NOT CONSTITUTE AN OFFER TO SELL OR A SOLICITATION OF AN OFFER TO BUY A UNIT. NOR IS IT AN OFFERING OR SOLICITATION OF SALE IN ANY JURISDICTION WHERE THE DEVELOPMENT IS NOT REGISTERED IN ACCORDANCE WITH APPLICABLE LAW OR WHERE SUCH OFFERING OR SOLICITATION WOULD OTHERWISE BE PROHIBITED BY LAW. OBTAIN ALL DISCLOSURE DOCUMENTS REQUIRED BY APPLICABLE LAWS AND READ THEM BEFORE SIGNING ANYTHING. NO GOVERNMENTAL AGENCY HAS JUDGED THE MERITS OR VALUE, IF ANY, OF THE DEVELOPMENT. FURTHER, OWNERSHIP OF A UNIT IN THE DEVELOPMENT WILL BE SUBJECT TO THE TERMS OF VARIOUS DOCUMENTS RELATING TO THE DEVELOPMENT.

THE FINAL SHAPE, DESIGN, AND SQUARE FOOTAGE OF BUYER'S UNIT ARE SUBJECT TO CONSTRUCTED MEASUREMENTS. ALL DIMENSIONS ARE APPROXIMATE AND SUBJECT TO CONSTRUCTION VARIANCES. PLANS AND DIMENSIONS FOR SIMILAR UNITS MAY CONTAIN MINOR VARIATIONS FROM FLOOR TO FLOOR. ALL FLOOR PLANS AND FLOOR PLAN ELEMENTS SUCH AS: ROOM SIZES, CASEWORK, OTHER FIXTURES AND FURNITURE ARE NOT DRAWN TO SCALE, MAY NOT BE INCLUDED IN EVERY UNIT WITH THAT FLOOR PLAN AND ARE SHOWN FOR ILLUSTRATIVE PURPOSES ONLY. SELLER RESERVES THE RIGHT TO MAKE CHANGES AND MODIFICATIONS TO PLANS, MATERIALS, SPECIFICATIONS, FEATURES AND DELIVERY OF HOME WITHOUT NOTICE OR OBLIGATION. THE CALIFORNIA DEPARTMENT OF REAL ESTATE HAS NOT INSPECTED, EXAMINED, OR QUALIFIED THIS OFFERING. CALDRE# 02098897.

